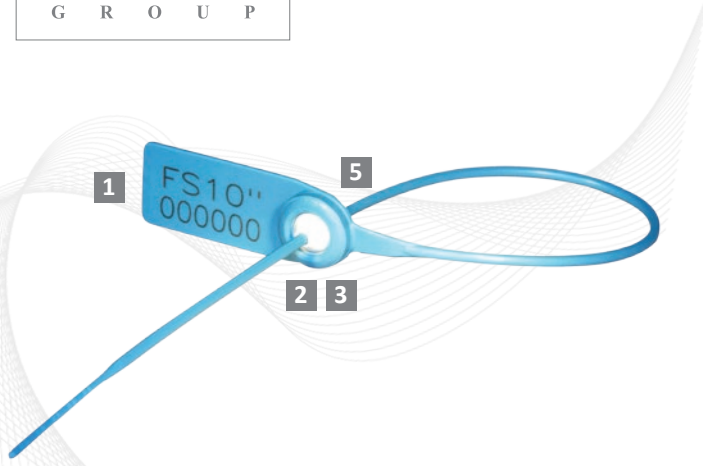


Indicative Seal · Data Sheet

# Fast Seal



## Versatile Pull-Tight Seal

The Fast Seal is a relatively strong seal despite its small dimensions. This is partly due to the metal locking mechanism, which secures the seal.

The Fast Seals are available in either Polypropylene (PP) or Nylon. The characteristics of Nylon material make it stronger and with better pull strength than PP material.

The Fast Seals are easy to use for all applications with small sealing facilities e.g. cassettes for ATM machines and money boxes on which the Fast Seals are widely utilised.

## Features

- 1 The Fast Seals are etched with permanent laser marking. Laser marking offers the highest level of security as it cannot be removed and replaced.
- 2 Heat staking technology is used to permanently fix the cap to the Fast Seal. Heat staking is too strong to be cut or forced open without leaving clear evidence of tampering.
- 3 Metal clip locking provides greater pull strength to the thin and flexible strap.
- 4 Durable Nylon or PP securing strap gives the user a choice of strength to match different applications.
- 5 Colour coding is made possible by using combinations of white-based seals and different coloured caps.

## Technical Specifications

### PRODUCT

Product	Material	Locking Space	Strap Dimensions	Pull Strength	Marking Area	Max Marking Digits
Fast Seal 5"	<b>Body:</b> PP/Nylon	125 mm	∅ 2.3 mm	18kg (PP) / 21kg (NY)	<b>Flap:</b> 15 x 30 mm	8
Fast Seal 8"		200 mm	∅ 2.3 mm		<b>Flap:</b> 15 x 30 mm	8
Fast Seal 10"		250 mm	∅ 2.3 mm		<b>Flap:</b> 15 x 30 mm	8
Fast Seal 12"		300 mm	∅ 2.3 mm		<b>Flap:</b> 15 x 30 mm	8

### INNER CARTON

	Carton Quantity	Dimensions	Weight kg/carton	Volume m <sup>3</sup> /carton
FS 5"	1,000 pcs	275 x 225 x 155 mm	2.20	0.00959
FS 8"	1,000 pcs	350 x 225 x 185 mm	2.68	0.01457
FS 10"	1,000 pcs	385 x 210 x 215 mm	3.10	0.01738
FS 12"	1,000 pcs	450 x 210 x 215 mm	3.52	0.02032

### OUTER CARTON

	Quantity	Dimensions	Weight kg/carton	Volume m <sup>3</sup> /carton
FS 5"	5,000 pcs	805 x 282 x 240 mm	11.76	0.05448
FS 8"	5,000 pcs	950 x 355 x 225 mm	14.02	0.07588
FS 10"	5,000 pcs	1090 x 458 x 225 mm	16.44	0.09712
FS 12"	5,000 pcs	1070 x 458 x 225 mm	18.74	0.11026

Standard Colours



**FMM EXCELLENCE AWARD 2012**  
QUEST FOR CONTINUOUS IMPROVEMENT  
BEST MANUFACTURER IN MALAYSIA IN 2012