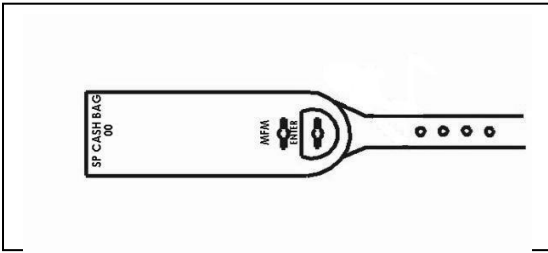
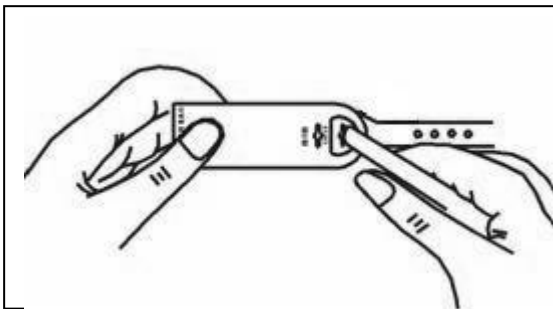


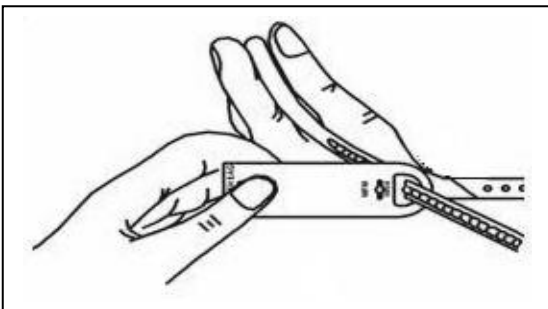
# SP CASH BAG SEAL → LOCKING PROCEDURE



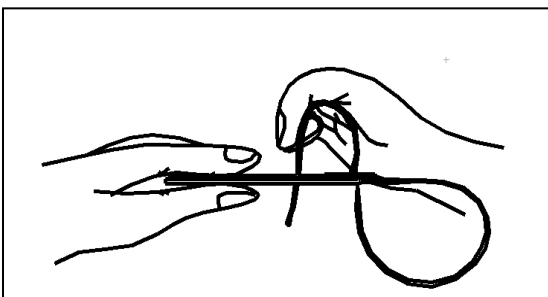
**Diagram A**



**Diagram B**



**Diagram C**



**Diagram D**

## **STEP 1**

Make sure the seal flap being placed with the rear side facing the user, as shown in Diagram A.

## **STEP 2**

Hold the seal flap using one hand and with the other, insert the strip at the entry hole, as shown in Diagram B.

## **STEP 3**

After inserting, pull the strip tight till the maximum and ensure there is no gap left after sealing, as shown in Diagram C

## **STEP 4**

Then, slot the extra tail in the hole placed on the flap, as shown in Diagram D